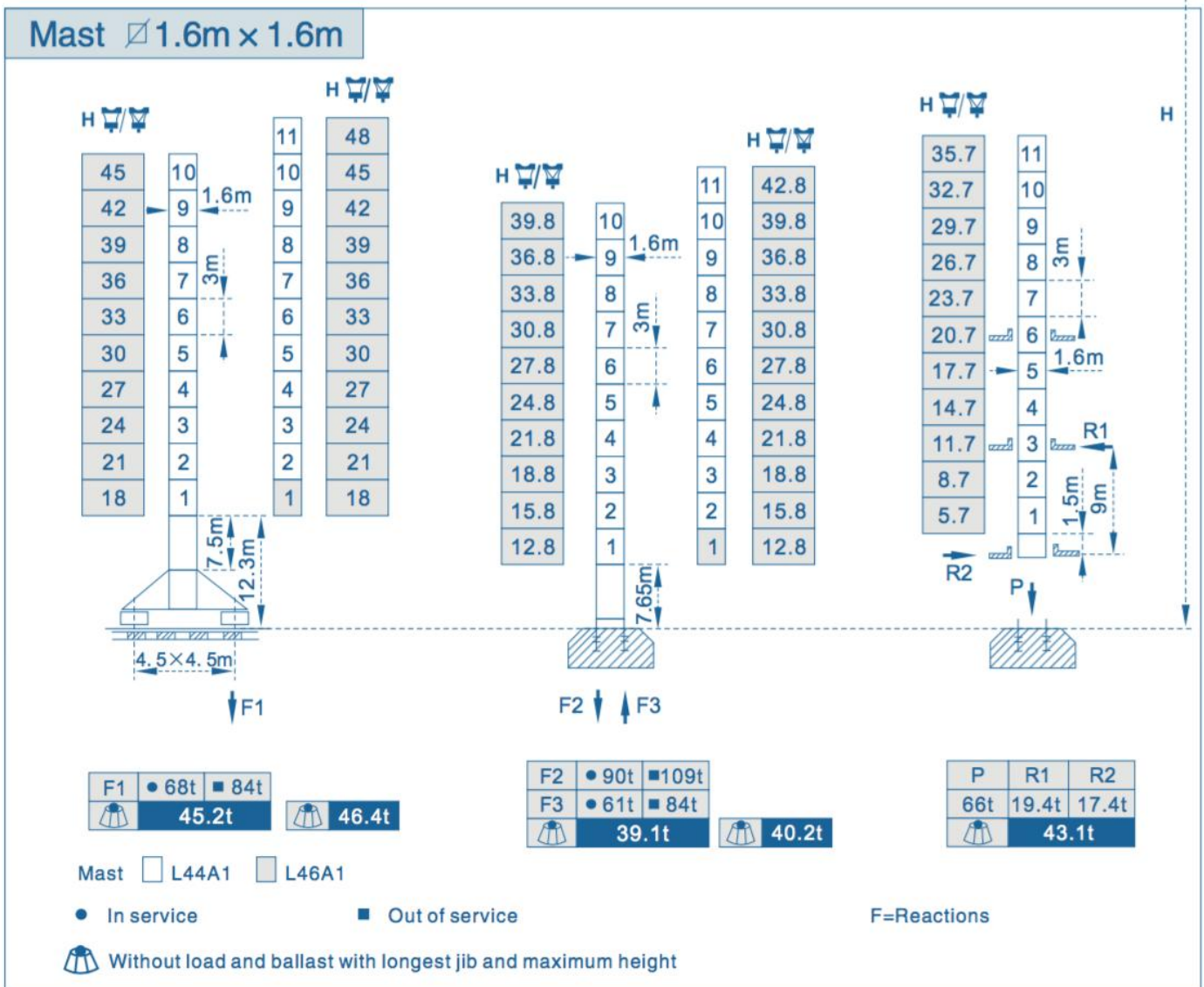
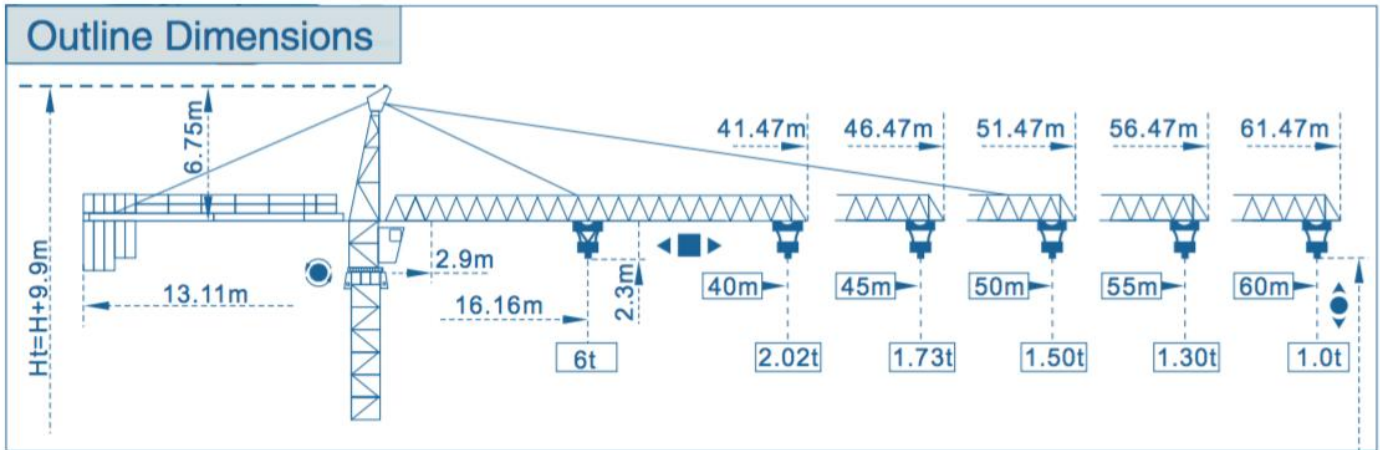




STT 6010-6

Experts in the field





Load diagrams

Jib

60m



2.9	→	14.91	16	18	20	22	25	26.34	26.97	30	32	35	37	40	42	45	47	50	52	55	57	60	m
		6	5.52	4.79	4.22	3.76	3.2	3	3	2.63	2.42	2.16	2.01	1.81	1.69	1.54	1.44	1.32	1.25	1.15	1.08	1.0	t

55m



2.9	→	16.15	18	20	22	24	26	28	28.5	30	32	34	35	38	40	42	45	48	50	52	55	m
		6	5.27	4.65	4.14	3.72	3.37	3.07	3	3	2.69	2.50	2.40	2.16	2.02	1.90	1.73	1.58	1.50	1.41	1.30	t

50m



2.9	→	16.15	18	20	22	24	26	28	28.5	30	32	34	35	38	40	42	45	48	50	m
		6	5.27	4.65	4.14	3.72	3.37	3.07	3	3	2.69	2.50	2.40	2.16	2.02	1.90	1.73	1.58	1.50	t

45m





2.9	→	16.15	18	20	22	24	26	28	28.5	30	32	34	35	38	40	42	45	m
		6	5.27	4.65	4.14	3.72	3.37	3.07	3	3	2.69	2.50	2.40	2.16	2.02	1.90	1.73	t

40m



2.9	→	16.15	18	20	22	24	26	28	28.5	30	32	34	35	38	40	m
		6	5.27	4.65	4.14	3.72	3.37	3.07	3	3	2.69	2.50	2.40	2.16	2.02	t



Standard trolley 2/4 fall (When using  subtract 0.1t from the loads )

Specifications Mechanisms						
Mechanisms	Motor type	Speeds m/min		Capacity t.	Rope lenght	Motor kW
Hoisting	33RPC15D ⬆	2 fall	0-40	3	500m >500m★	24
			0-80	1.5		
		4 fall	0-20	6		
			0-40	3		
	33LVF15B ⬆	2 fall	0-40	3	500m >500m★	24
			0-80	1.5		
		4 fall	0-20	6		
			0-40	3		
Trolleying	XD55L ◀■▶	0-58			55N.m	
	4DCV ◀■▶	0-58			3.3	
Slewing	OMD45 ●	0-0.7r/min			2×4.4	
	RCV95 ●	0-0.7r/min			2×95N.m	
Travelling	RT443 ◀●▶	0-12.5-25			4×1.7/3.4	
	18TVF ◀●▶	0-25			4×3.4	
Mains	380V-50Hz, 53.8kVA					

★ To be supplied according to client's specific requirements

This commercial documents is not legally bindig.
For any technical information, please refer to
the corresponding instructions.

